



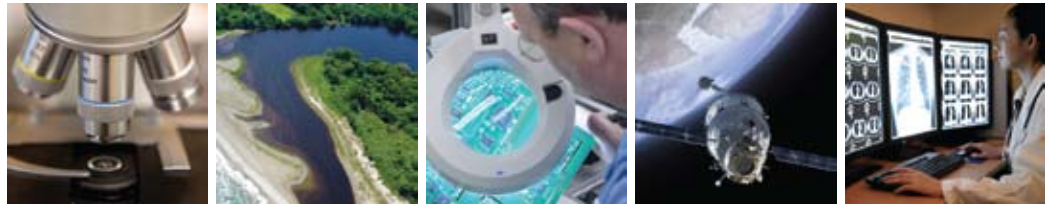
Showcasing Research and Education Projects Supported by the National Science Foundation

The Coalition for National Science Funding (CNSF) is an alliance of over 135 organizations united by a concern for the future vitality of the national science, mathematics, and engineering enterprise. CNSF supports the goal of increasing the national investment in the National Science Foundation's research and education programs. These programs increase and develop the knowledge base needed for pushing the frontiers of science, mathematics and engineering disciplines; contribute to the development of the future science and technology workforce; underpin new fields of inquiry; and promote interdisciplinary research and education – all of which facilitate technological innovation.



### COALITION FOR NATIONAL SCIENCE FUNDING

- Afterschool Alliance
- American Anthropological Association
- American Association for the Advancement of Science
- American Association for Dental Research
- American Association of Physics Teachers
- American Astronomical Society
- American Chemical Society
- American Educational Research Association
- American Geosciences Institute
- American Geophysical Union
- American Institute for Medical and Biological Engineering
- American Institute of Biological Sciences
- American Institute of Physics
- American Mathematical Society
- American Physical Society
- American Physiological Society
- American Political Science Association
- American Psychological Association
- American Society for Biochemistry and Molecular Biology
- American Society for Engineering Education
- American Society for Microbiology
- American Society of Agronomy
- American Society of Civil Engineers
- American Society of Mechanical Engineers
- American Society of Plant Biologists
- American Sociological Association
- American Statistical Association
- Arafune Government Relations Group
- Arctic Research Consortium of the U.S. (ARCUS)
- Associated Universities, Inc.
- Association for Psychological Science
- Association for the Sciences of Limnology & Oceanography
- Association for Women in Mathematics
- Association for Women in Science
- Association of American Geographers
- Association of American Medical Colleges
- Association of American Universities
- Association of Environmental & Engineering Geologists
- Association of Public and Land-grant Universities
- Association of Research Libraries
- Association of Science-Technology Centers
- Association of Universities for Research in Astronomy, Inc. (AURA)
- Association of University Research Parks
- The Bagley Group, LLC
- Biophysical Society
- Boise State University
- Boston University
- Brown University
- California Institute of Technology
- Cavarocchi Ruscio Dennis Associates, LLC
- Coalition for Academic Scientific Computation
- Coastal and Estuarine Research Federation
- Columbia University
- Computing Research Association
- Consortium for Ocean Leadership
- Consortium of Social Science Associations
- Consortium of Universities for the Advancement of Hydrologic Science
- Cornell University
- Council of Graduate Schools
- Council of Scientific Society Presidents
- Council on Food, Agricultural and Resource Economics
- Council on Undergraduate Research
- Crop Science Society of America
- Duke University
- Earthquake Engineering Research Institute
- Ecological Society of America
- Entomological Society of America
- Federation of American Societies for Experimental Biology
- Federation of Associations in Behavioral & Brain Sciences
- Federation of Materials Societies
- Genetics Society of America
- Geological Society of America
- Georgia Institute of Technology
- Harvard University
- Human Factors and Ergonomics Society
- IRIS Consortium
- Indiana University
- Institute of Electrical and Electronics Engineers (IEEE-USA)
- Lewis-Burke Associates LLC
- Linguistic Society of America
- Madison Associates LLC
- George Mason University
- Massachusetts Institute of Technology
- Materials Research Society
- Mathematical Association of America
- Michigan State University
- Museum of Science, Boston
- MWW Group
- National Association of Marine Laboratories (NAML)
- National Communication Association
- National Council for Science and the Environment
- National Ecological Observatory Network (NEON)
- National Ground Water Association
- National Postdoctoral Association
- National Science Teachers Association
- National Society of Professional Engineers
- North Carolina State University
- Northwestern University
- The Ohio State University
- The Oldaker Group, LLC
- Optical Society of America
- Oregon State University
- Ornithological Council
- Pennsylvania State University
- Population Association of America/Association of Population Centers
- Princeton University
- Rensselaer Polytechnic Institute
- ResearchAmerica
- Rowan University
- Rutgers, The State University of New Jersey
- Seismological Society of America
- Semiconductor Industry Association
- Society for Historical Archaeology
- Society for Industrial and Applied Mathematics
- Society for Neuroscience
- Society for Research in Child Development
- Soil Science Society of America
- SPIE
- State University of New York System (SUNY)
- State University of New York at Stony Brook
- Stevens Institute of Technology
- Texas Tech University
- Tufts University
- UNAVCO
- University Corporation for Atmospheric Research
- University of California
- University of Chicago
- University of Cincinnati
- University of Colorado, Boulder
- University of Florida
- University of Illinois
- University of Michigan
- University of New Mexico
- University of New Orleans
- University of Pennsylvania
- University of South Carolina
- University of Wisconsin
- Vanderbilt University
- Washington State University
- Washington University in St. Louis
- Wells Consulting
- West Virginia University
- Woods Hole Oceanographic Institution

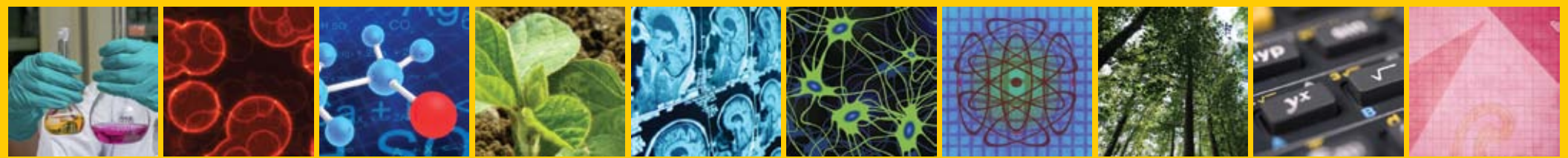


# INVESTMENTS IN STEM RESEARCH & EDUCATION: FUELING AMERICAN INNOVATION

COALITION FOR NATIONAL SCIENCE FUNDING  
20TH ANNUAL EXHIBITION AND RECEPTION  
WEDNESDAY, MAY 7, 2014  
RAYBURN HOUSE OFFICE BUILDING  
WASHINGTON, DC

- CO-SPONSORS**
- American Astronomical Society
  - American Mathematical Society
  - Associated Universities, Inc.
  - Coalition for Academic Scientific Computation
  - Consortium of Social Science Associations
  - Entomological Society of America
  - Federation of American Societies for Experimental Biology
- DONORS**
- Federation of Associations in Behavioral & Brain Sciences
  - The Ohio State University
  - Princeton University

Coalition for National Science Funding (CNSF)  
1527 Eighteenth Street, NW Washington, DC 20036  
202.588.1100 • www.cnsfweb.org



# EXHIBITORS 2014

## American Economic Association/Population Association of America

Continuity and Change in American Economic and Social Life

Prof. CHARLES BROWN  
University of Michigan

## American Educational Research Association

Integrating Quality Talk Professional Development to Enhance Professional Vision and Leadership for STEM Teachers in High-Need Schools

P. KAREN MURPHY  
The Pennsylvania State University

## American Geosciences Institute/American Geophysical Union/Geological Society of America

25,000 Feet under the Sea: Studying Japan's 2011 Tohoku Earthquake

Dr. PATRICK FULTON and Dr. JAMES SAMPLE  
University of California, Santa Cruz and Northern Arizona University

## American Mathematical Society

Topological Sensor Networks

Prof. ROBERT GHRIST  
University of Pennsylvania

## American Psychological Association/Vanderbilt University

Russell the Robot: Engaging Children with Autism through Psychological and Engineering Research

ZACHARY WARREN, PhD and NILANJAN SARKAR, PhD  
Vanderbilt University

## American Society of Plant Biologists

From Fire to Food: How Smoke Signals May Unlock New Innovations in Agriculture

DAVID C. NELSON, PhD  
University of Georgia

## American Statistical Association

Statistics for Mixed Big Data in Cancer Genomics

Prof. GENEVERA ALLEN  
Rice University

## Associated Universities, Inc.

The National Radio Astronomy Observatory

MARK ADAMS

## Association of Science-Technology Centers Center for Advancement of Informal Science Education

Showcasing EHR Grants: Intersections and CAISE

MARGARET GLASS, PhD

## Brown University

How Mathematics Research Fuels Innovation

Prof. JILL PIPHER and RUTH CRANE  
Institute for Computational and Experimental Research in Mathematics (ICERM)

## Coalition for Academic Scientific Computation

HPC Centers & STEM

Dr. CURT HILLEGAS  
Princeton University

## Computing Research Association

Printable Robots and Soft Robots

ANKUR MEHTA, JOSEPH DELPRETO and ROBERT KATZSCHMANN  
Massachusetts Institute of Technology

## Consortium of Universities for the Advancement of Hydrologic Science Inc.

Water Data Center—Advancing Hydrologic Research and Education

EMILY GEOSLING

## Council on Undergraduate Research

Institutionalizing Undergraduate Research for State Systems and Consortia

SHONTAY KINCAID

## Ecological Society of America

Wildflower Response to Climate Change

Prof. DAVID INOUIYE  
University of Maryland

## Entomological Society of America

Optimizing Crop Yields: Pollinators, Pests and Pathogens

Prof. GARY FELTON and Prof. CHRISTINA GROZINGER  
The Pennsylvania State University

## Genetics Society of America

Beyond the Gene: Epigenetic Control of Seed Development

MARY GEHRING, PhD  
Massachusetts Institute of Technology  
Whitehead Institute for Biomedical Research

## Michigan State University

STEM Genetics: Steps Towards Success

Prof. MICHELLE WILLIAMS and AMY FRAHM

## Museum of Science, Boston

Building Computational Thinking in Museum Exhibits

CLARA CAHILL

## National Communication Association

Improving Public Deliberation through the Citizens' Initiative Review

Prof. JOHN GASTIL and Prof. KATIE KNOBLOCH  
The Pennsylvania State University and Colorado State University

## NC State University

Dielectrics and Piezoelectrics

Dr. ELIZABETH C. DICKEY

## Northwestern University

Rat Whiskers: Novel Engineering Applications and Insights for Neuroscience

Prof. MITRA HARTMANN

## The Ohio State University

Growing STEM Talent at a Large Scale

Prof. DAVID TOMASKO and JASMINE PETERS

## Oregon State University

Sustainable Materials Chemistry and Physics Education Reform

Prof. DOUGLAS KESZLER, Prof. JANET TATE and JENN AMADOR

## Princeton University

High-Assurance Cloud Services

Prof. MICHAEL FREEDMAN

## Society for Industrial and Applied Mathematics

The Mathematics of Stem Cells, Drug Resistance and Cancer

Prof. DORON LEVY  
University of Maryland

## Society for Research in Child Development

Parenting for STEM Success in African American Families

Prof. BETH KURTZ-COSTES and Prof. STEPHANIE ROWLEY  
University of North Carolina, Chapel Hill and University of Michigan

## Tufts University

Engineering Solutions for Clean Water

Dr. KURT PENNELL and Dr. DANIELE LANTAGNE

## University of California

Shaping the Future of Innovation and Research

ROXANE COHEN SILVER, DAVID FELDMAN, ZACH REAGH and KRISTIN ROHER  
University of California, Irvine

Into the Loop Alliance: Exploring Computer Science

JANE MARGOLIS  
University of California, Los Angeles

Fire, Erosion and the Global Carbon Cycle

ASMERET ASEFAW BERHE  
University of California, Merced

Improving Success of First-Generation, Ethnically Diverse Students in STEM Majors

MICHAEL MCKIBBEN  
University of California, Riverside

The Role of the Loss of Anti-Oxidants in Developing Liver Tumors

BRITTANY ANDERTON  
University of California, San Francisco

## University of Colorado, Boulder

CCAT Telescope: Research, Technology and Training

Prof. JASON GLENN

## University of Illinois at Chicago

Faces of STEM Education & Research at UIC

Prof. MITRA DUTTA

## University of New Mexico

An HSI Doing World Class Research and Education in Micro-Engineered Materials

CARLOS ROMERO

## West Virginia University

The Pulsar Content of Globular Clusters

Dr. DUNCAN LORIMER

